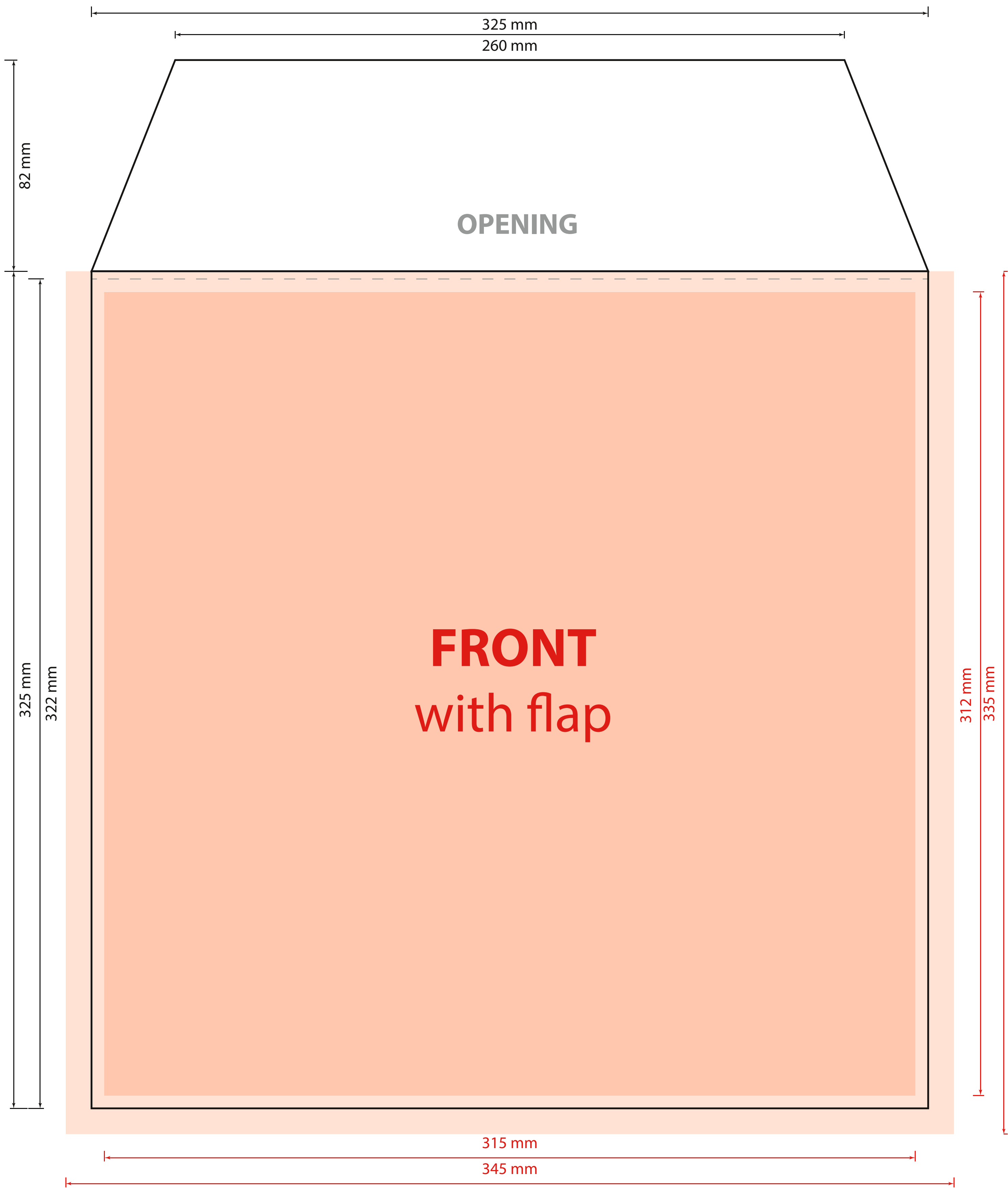


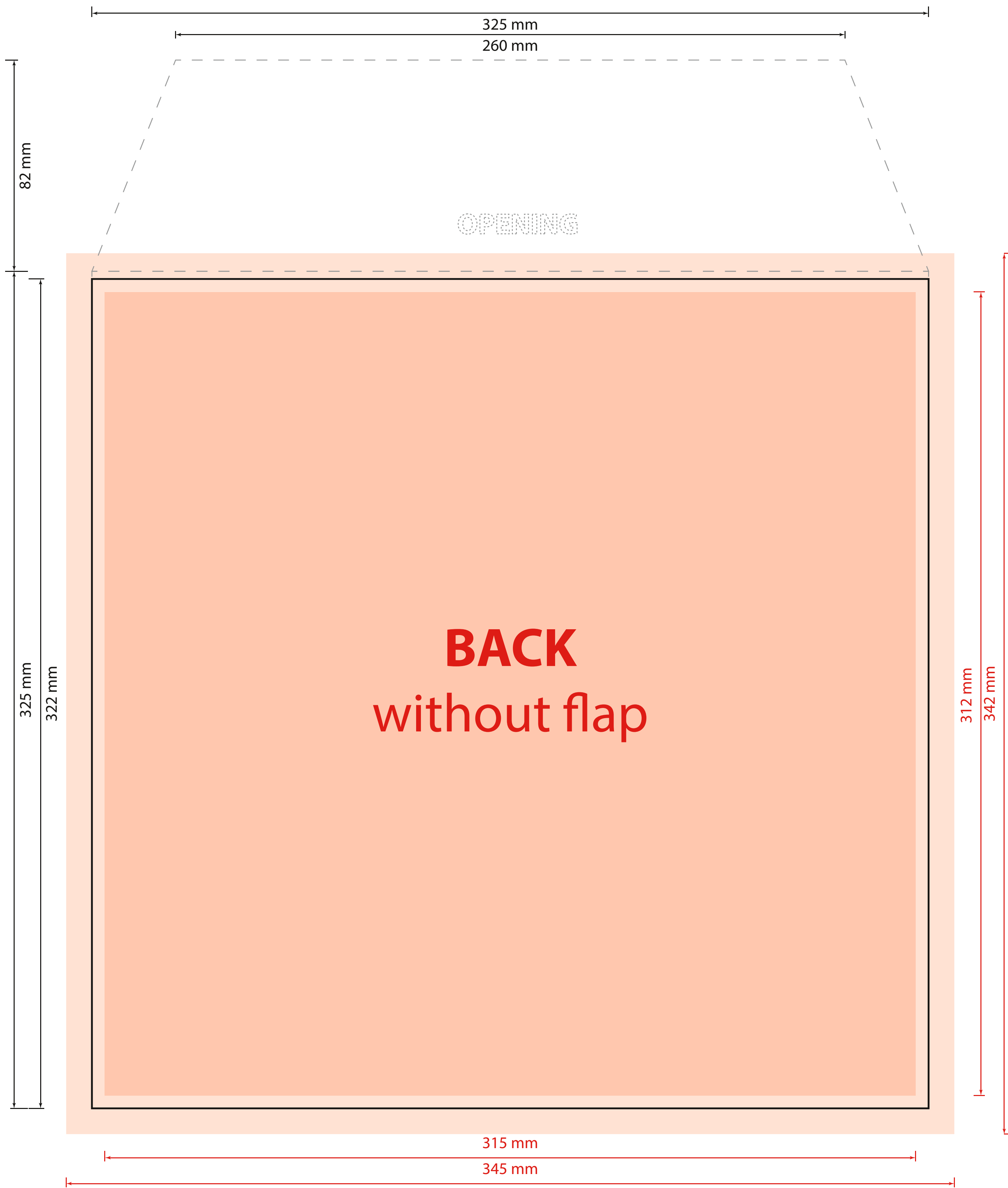


I2PAP	spine width: -	open format: 325 x 407 mm
	opening: at top	closed format: 325 x 325 mm

Printing is usually done using the screen printing process. Designs should NOT have a line thickness of less than 0.15 mm (positive or negative).
Please note: All data needs to be created according to the **General Print Specifications**.



- Background extends to the seam - 345 x 335 mm
!!! PMS metallic colours cannot be printed right up to the seam !!!
- Motif area - 315 x 312 mm
- PVC material front dimensions
- PVC material back dimensions



- Background extends to the seam - 345 x 342 mm
!!! PMS metallic colours cannot be printed right up to the seam !!!
- Motif area - 315 x 312 mm
- PVC material back dimensions
- PVC material front dimensions



