

12“ Gatefold with 6 mm spine | Product Specification

LP I042 - **frontside glued**
content: 1 LP in innerlseeve

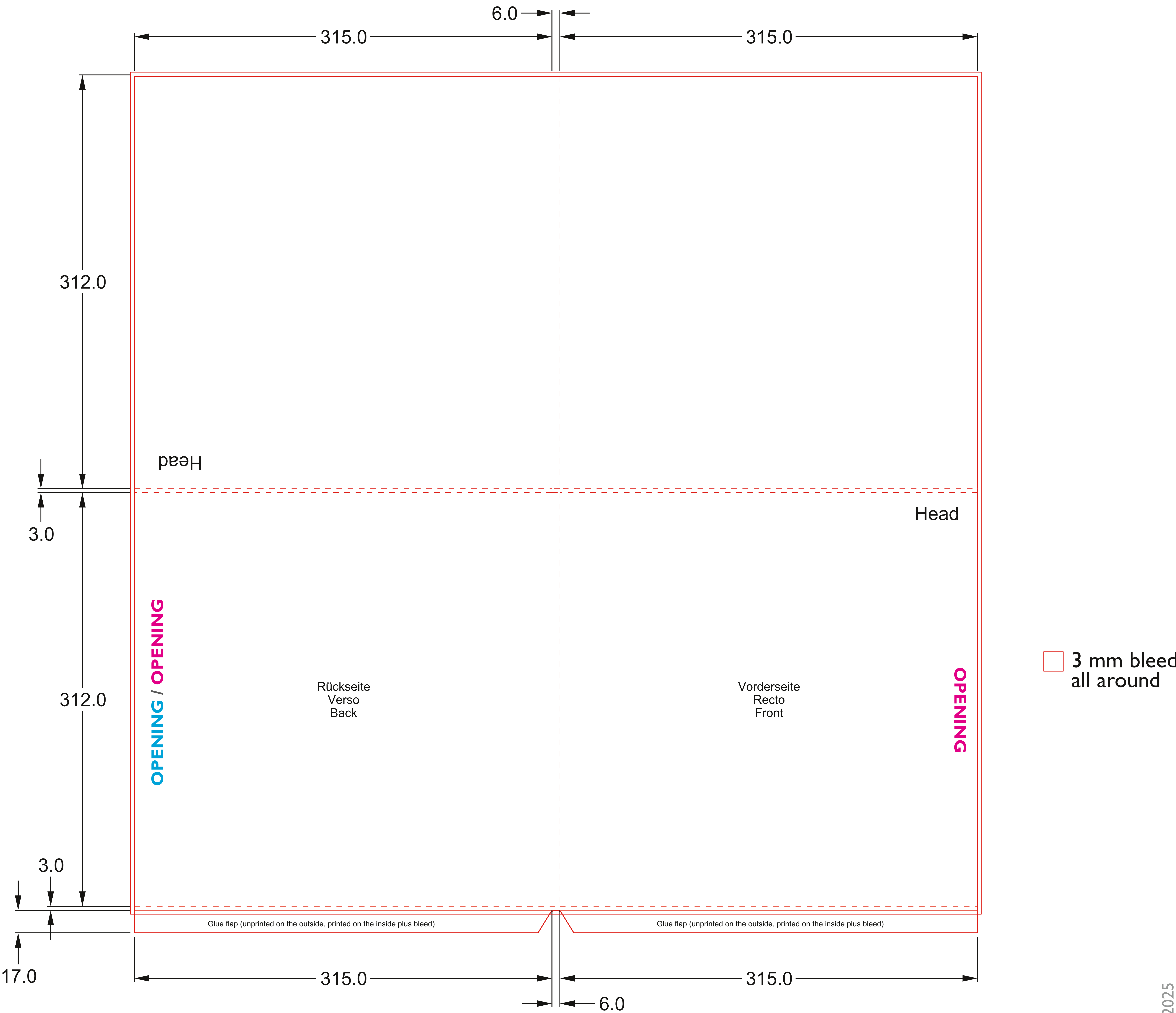
LP I043 - **both sides open**
content: 2 LPs in innerlseeves

open format: 636 x 647 mm - without bleed
closed format: 315 x 6 x 312 mm

Inside print:
Mirror the template horizontally with the motif.
Create the motif on the opposite side on the flaps and add bleed.
See example file ‘Inside print with motif’.

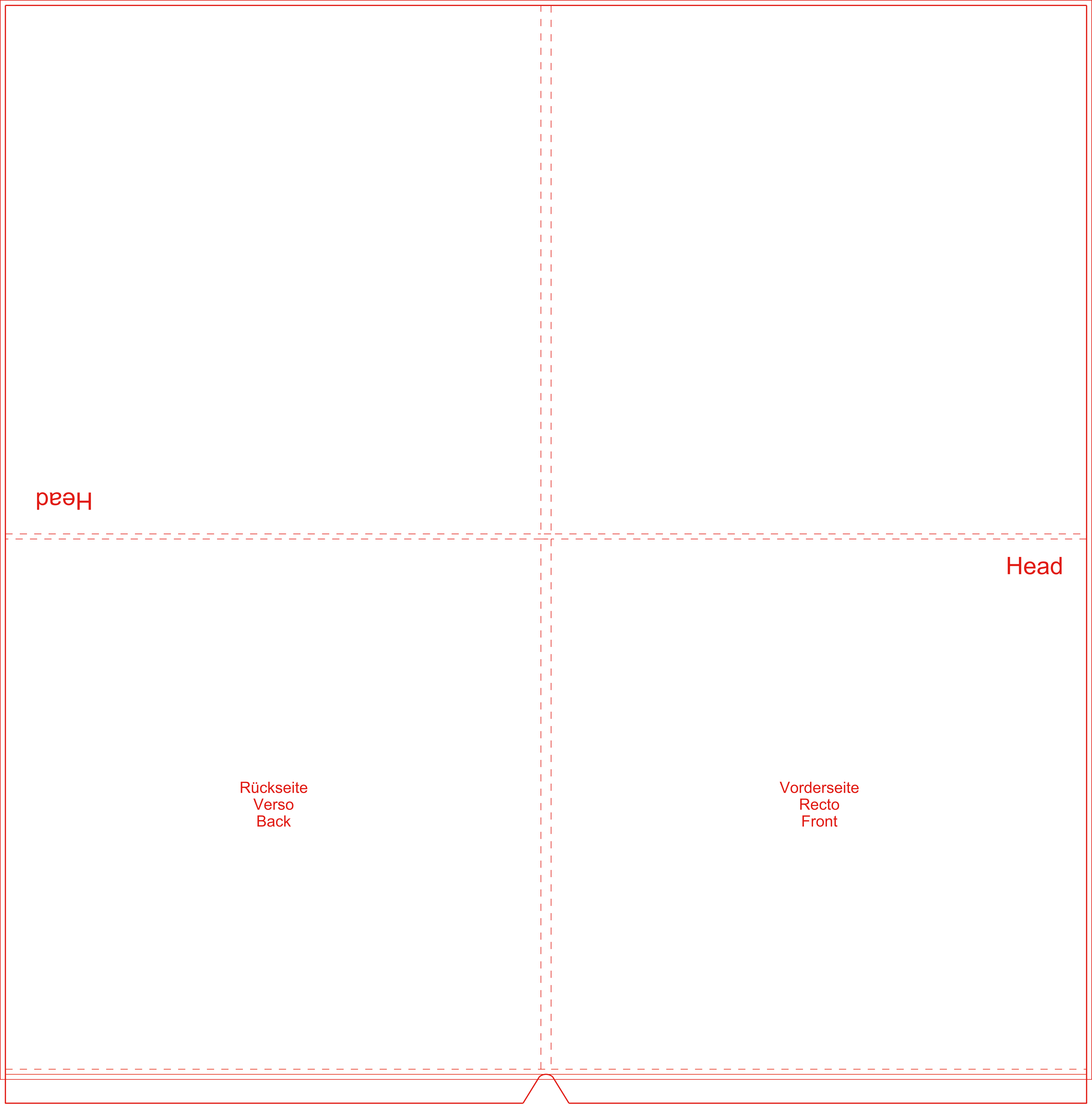
Create colour areas in the format 642 x 653 mm (entire sleeve format with flaps incl. 3 mm bleed per side).

Please note:
All data needs to be created according to the **General Print Specifications**.
If a gatefold with centre hole(s) is required, please request a separate template.



Please remove the template from the print file before handing in the artwork.
The printing motif should be in the centre of the document.
The document size should be the motiv with bleed.

!!! Use the templates on page 2 !!!



Head

Head

Rückseite
Verso
Back

Vorderseite
Recto
Front