

# 12" wide spine cover with 7mm spine | Product Specification



**LP 1041** - without centre hole  
content: 3 LPs in inner sleeves

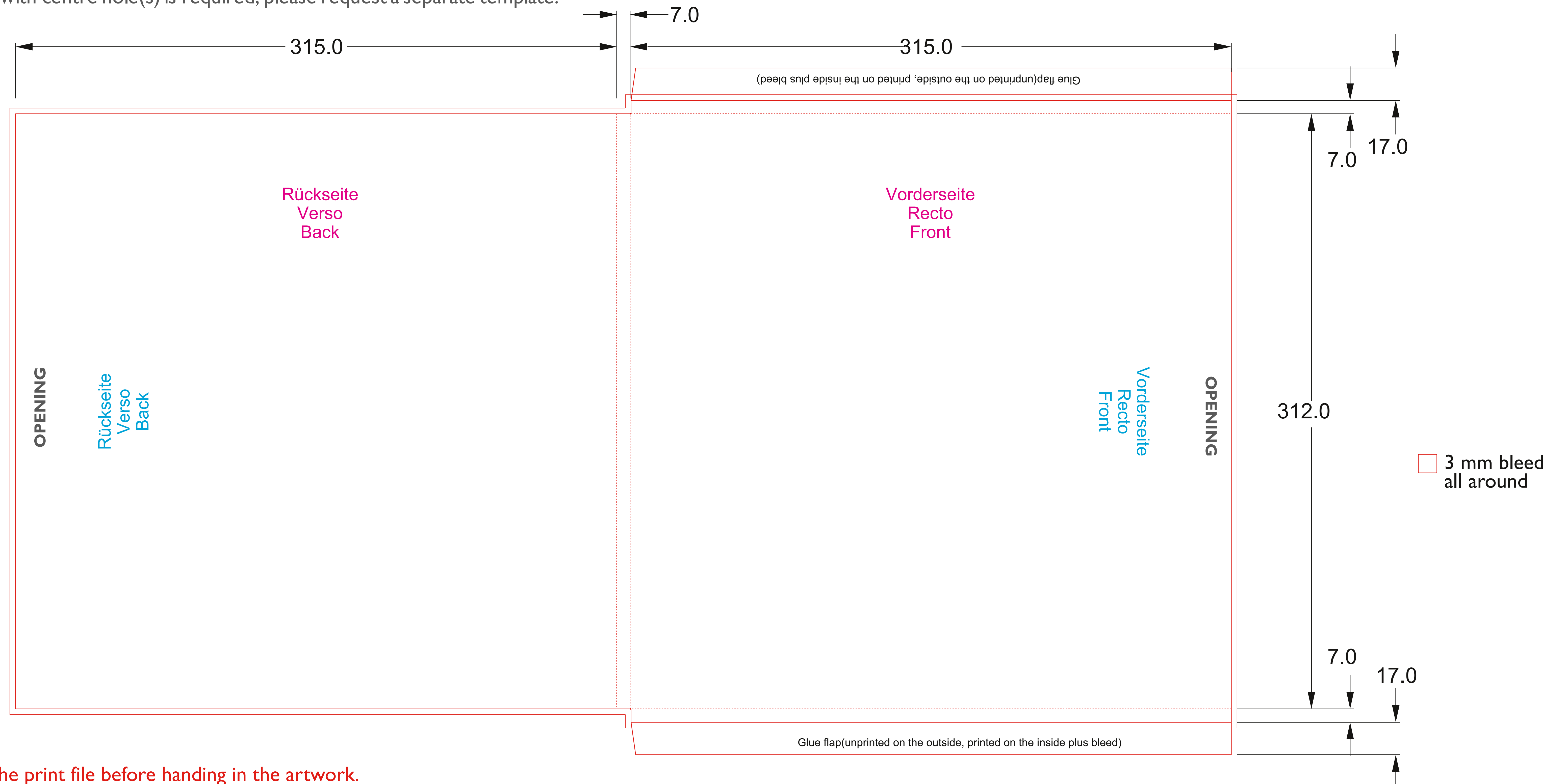
spine width: 7 mm  
opening: at top or right

open format: 637 x 350 mm - without bleed  
closed format: 315 x 7 x 312 mm

Inside print: Mirror the template horizontally with the motif. Create the motif on the opposite side on the flaps and add bleed. See example file 'Inside print with motif'.

Create colour areas in the format 643 x 366 mm (entire sleeve format with flaps incl. 3 mm bleed per side).

Please note: All data needs to be created according to the **General Print Specifications**.  
If a wide spine cover with centre hole(s) is required, please request a separate template.



Please remove the template from the print file before handing in the artwork.  
The printing motif should be in the centre of the document. The document size should be the motif with bleed.  
**!!! Use the templates on page 2 !!!**

