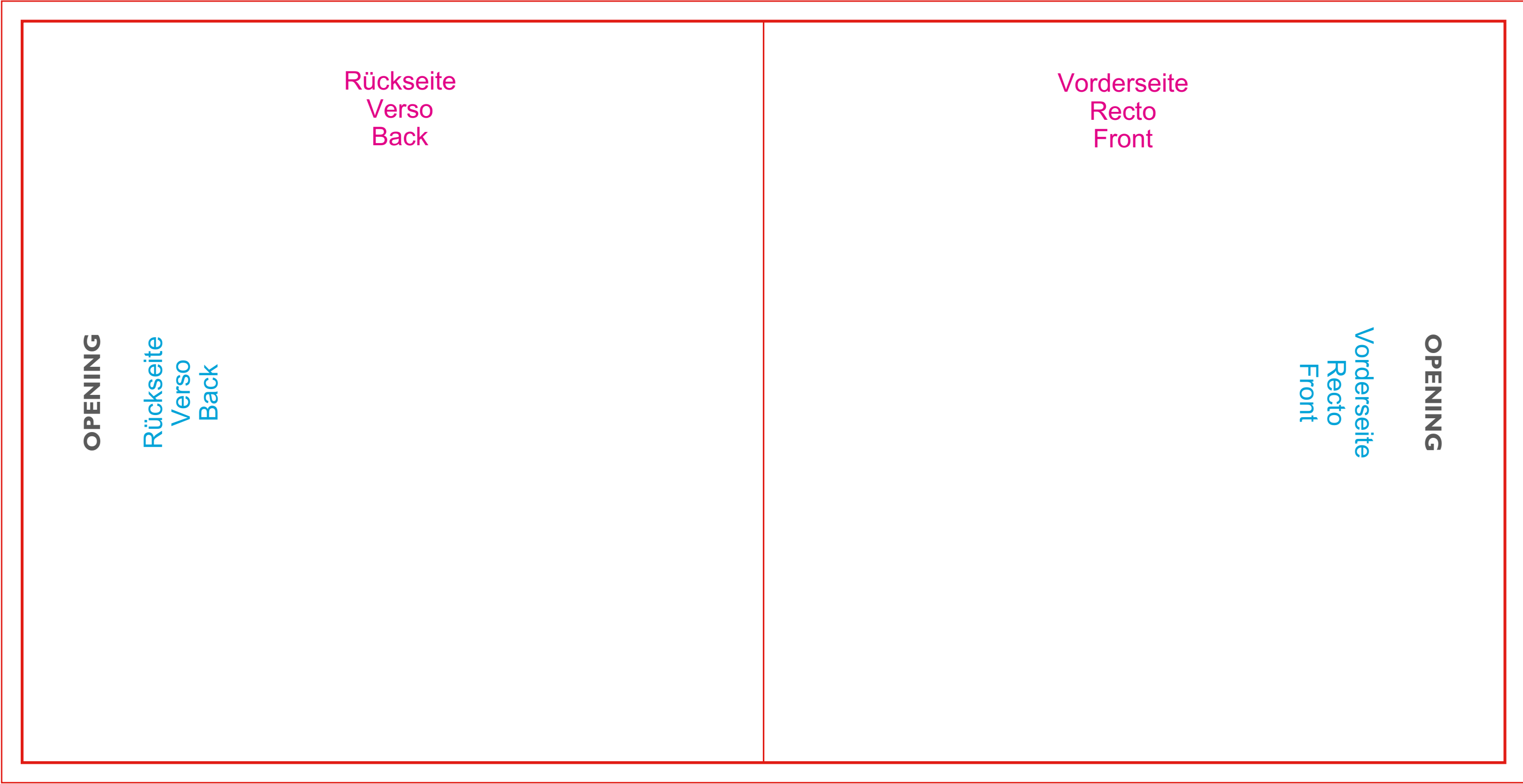


7“ Sleeve (cardboard) for one single in innersleeve | Product Specification

spine width: without spine | open format: 370 x 185 mm - without bleed, 380 x 195 mm - with bleed  
opening: at top or right | closed format: 185 x 185 mm

!!! 7" bags with centre hole only on request !!!

Please note: All data needs to be created according to the General Print Specifications.



 **5 mm** bleed  
all around

Please remove the template from the print file before handing in the artwork.  
The printing motif should be in the centre of the document. The document size should be the motiv with bleed.

!!! Use the templates on page 2 !!!

--	--