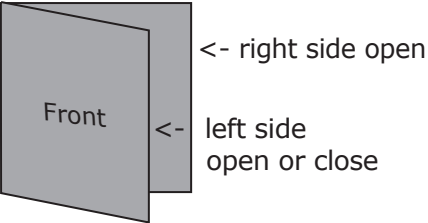
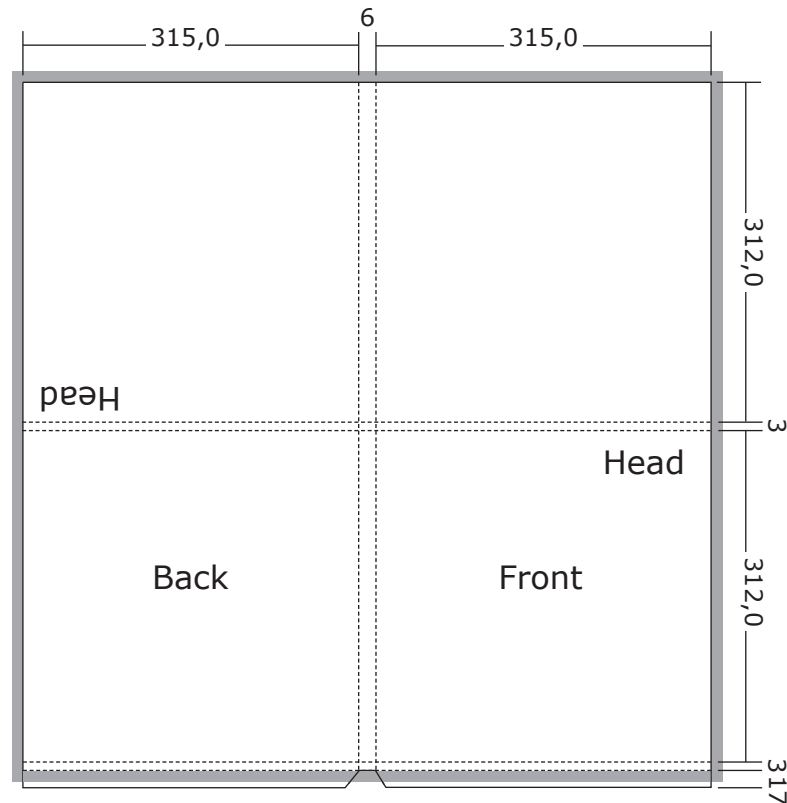



Product Specification

<p>Gatefold without centerhole</p> <p>Product: LP 1042 -> left side close LP 1043 -> booth side open</p>	<p>material: 300 gsm Cartulinas</p> <p>finish: dispersion varnish</p> <p>close format: 315,0 x 6,0 x 312,0 mm</p> <p>open format: 636,0 x 647,0 mm</p>	<p>Note: for 1 LP (LP 1042) for 2 LP (LP 1043)</p> <p>Optional you can use an Insert instead of the second LP.</p>	<p>Variations:</p> 
--	--	---	---



 = 3 mm bleed area